

Patient Information



CT Scan



Please remember:

To bring any previous scans or reports with you to assist our radiologists in understanding your medical history fully. Additionally, we accept any referral. Should you have any questions or need further assistance regarding your appointment, feel free to reach out to us at **(03) 9087 2120**.

**Heidelberg
Frankston**

Multi-Slice Low Dose CT Scans

A Multi-Slice Low Dose CT Scan allows for rapid capture of multiple body sections in a single rotation, constructing a 3-dimensional representation for precise diagnosis.

This sophisticated imaging technique aids in detecting a spectrum of conditions, including subtle fractures, tumors, kidney stones, strokes, and arterial blockages. It offers a comprehensive view of various body parts such as lungs, major organs, and the bowel, empowering accurate diagnoses.

Preparation for Precision Scans

Certain CT scans require specific preparation to ensure optimal imaging quality and accurate results. Please review the guidelines below, provided at the time of booking, to facilitate a seamless experience.

Guidelines for Preparation

- No Preparation Required for the Following CT Scans:
- Spine (cervical, thoracic, lumbosacral)
- Extremity (hand, wrist, elbow, shoulder, hip, knee, ankle, foot)
- Kidneys-Ureter-Bladder (KUB)
- Sinus/Facial Bones
- Most Brain Scans

CT Scans with IV Contrast & Fasting:

CT Scans with IV Contrast require fasting 4 hours before the examination and injection of intravenous (IV) contrast. These include scans involving neck, chest, abdomen, pelvis, liver, pancreas, kidney, and angiograms. Patients may potentially require a blood test to check for kidney function, current within the last 6 months.

Patient-Centric Procedures for Precision Imaging

Depending on your examination, you might need to change into a gown before being positioned on the CT scanner table.

Throughout the process, it is vital to remain still to avoid image blurring. An initial set of planning scans will locate the area of focus, followed by the primary imaging phase, typically lasting a minute or two, occasionally mere seconds. Some examinations may require breath-holding as instructed.

Understanding CT Intravenous Contrast

If your examination necessitates contrast, comprehensive information and a consent form will be provided upon your arrival. The administration of contrast enhances the diagnostic yield of the scan. However, if you have reservations about the dye or needle, we respect your preferences and can perform the scan without contrast.

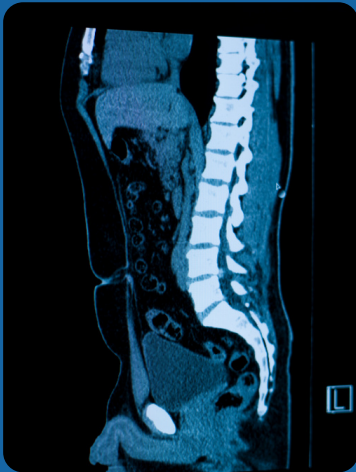
For patients receiving contrast, a 15-minute observation period post-injection is mandatory to monitor for potential delayed allergic reactions. Patients without contrast may resume normal activities immediately after leaving our facility.

(continued)

www.interconnectimaging.com.au

Patient Information

CT Scan



Please remember:

To bring any previous scans or reports with you to assist our radiologists in understanding your medical history fully. Additionally, we accept any referral. Should you have any questions or need further assistance regarding your appointment, feel free to reach out to us at **(03) 9087 2120**.

**Heidelberg
Frankston**



Ensuring Comprehensive Care

Following the scan, one of our specialised radiologists will review the images, generating a detailed written report within 24 - 48 hours. Urgent cases receive immediate attention, ensuring prompt delivery of results.

We recommend scheduling a follow-up appointment with your referring doctor or healthcare provider to discuss the results comprehensively. They are best suited to interpret and explain the findings to you, respecting our policy of not releasing results directly to patients.

Your Active Participation Matters

Please bring any previous scans or reports to assist in your evaluation. Any referral for a scan is valid at Interconnect Imaging, irrespective of its origin from another radiology provider.

We're Here to Help

Should you have any queries about your appointment, feel free to call us at (03) 9087 2120.

Respecting Your Time and Understanding

While we endeavour to maintain punctuality, complexities in certain cases or the needs of elderly and frail patients might cause unforeseen delays. Your patience and understanding is appreciated.